

LIGHT IN SHOP
devient



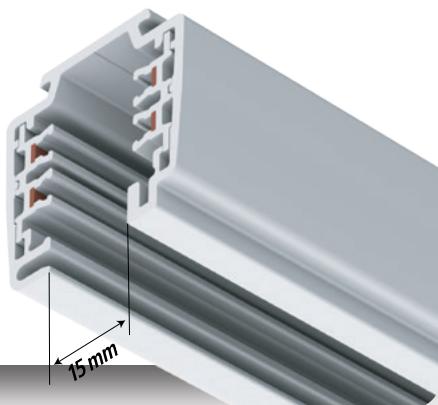
Document technique

RAIL

UNIPRO

Universal lighting track

The unipro® lighting track has been designed to be compatible with the most common spot light systems.



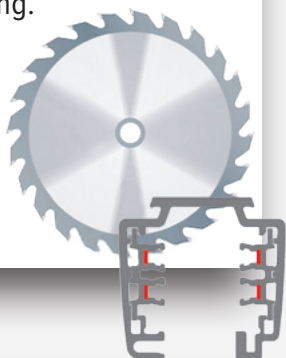
Universal adapter

The unipro® A75 adapter is universal, and designed to be compatible with unipro® lighting tracks as well as with most other common 3-circuit lighting tracks.



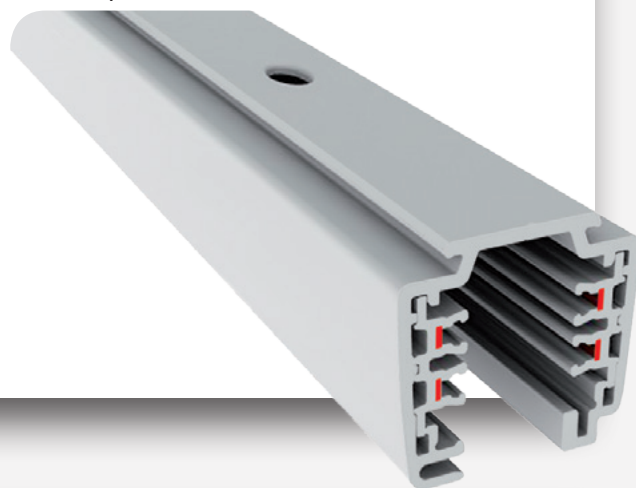
Easy to cut

The standard lengths for unipro® lighting tracks are 2, 3, and 4 metres. If necessary, they can be cut to the correct length on the installation site. Otherwise, there is no need to bend or tool the power conductions of the lighting track after the cutting.



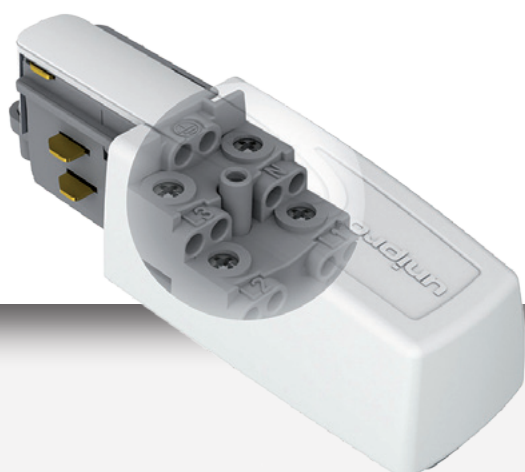
Easy to install

The unipro® lighting track has pre-cut holes on the top of the track, at 50 cm intervals.



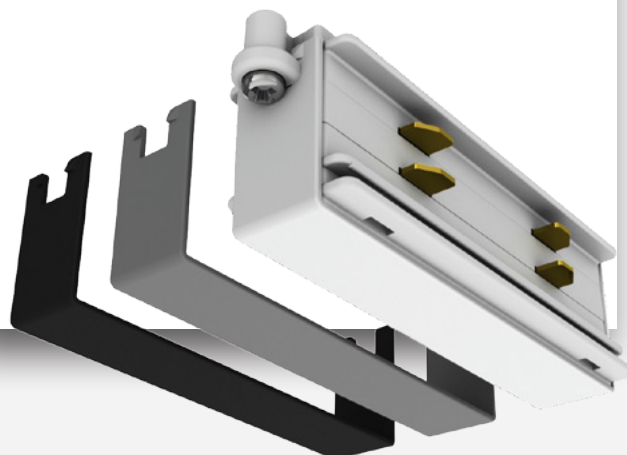
Easy to connect

The unipro® lighting track system's power supply units have reliable and easy to use screw terminals, which are suitable for stranded or solid wires with a maximum cross section of 2.5 mm².



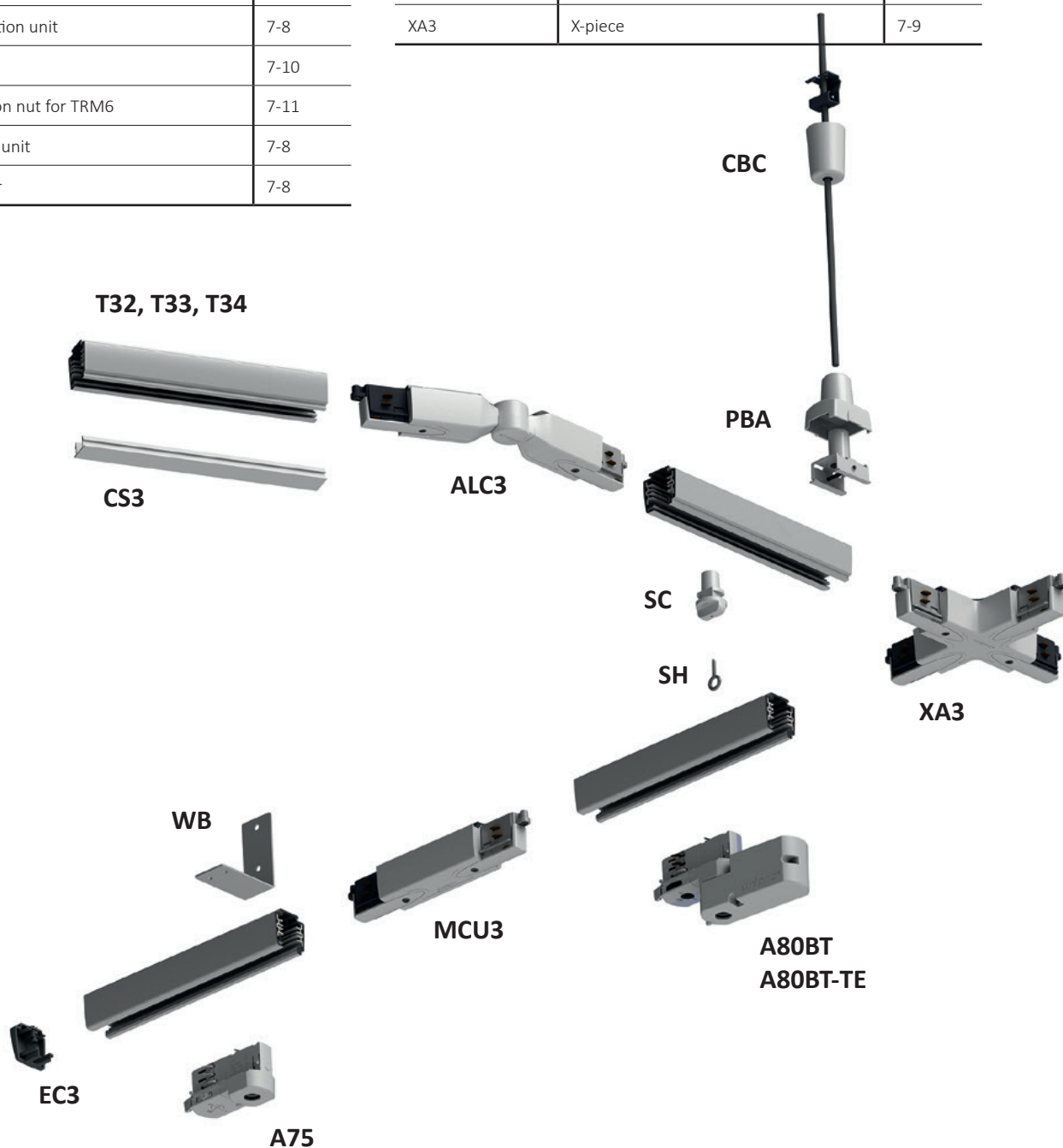
Fewer parts

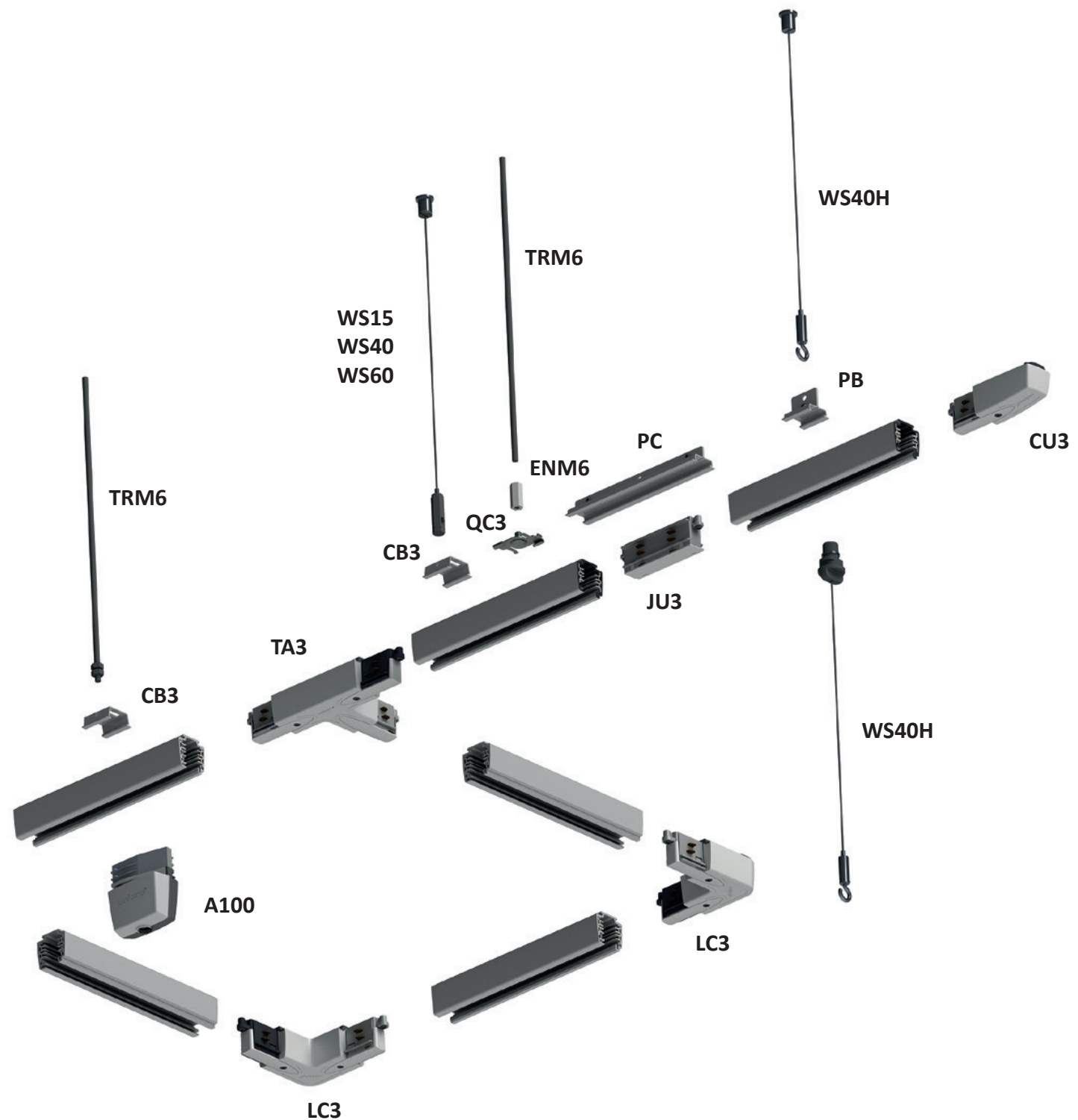
The unipro® lighting track system's L-corner and jointing unit are multi-functional. The polarity of the L-corner, and the colour of the jointing unit can be changed on site as necessary.







Product	Name	Page
T32, T33, T34	Surface lighting track	7-7
T32F, T33F, T34F	Recessed lighting track	7-7
A100	Power take-off adapter	7-9
A75	Adapters for lighting fixtures	7-14
A80BT	Bluetooth control unit	7-15
A80BT-TE	Bluetooth control unit	7-15
ALC3	Adjustable corner	7-9
CB3	Ceiling bracket	7-10
CBC	Ceiling bracket with cup	7-10
CP3	Cover plate	7-12
CS3	Cover stripe	7-12
CU3	Connection unit	7-8
EC3	End cap	7-10
ENM6	Extension nut for TRM6	7-11
JU3	Joining unit	7-8
LC3	L-corner	7-8

Product	Name	Page
MCU3	Middle connection unit	7-8
PB	Pendant bracket	7-10
PBA	Adjustable pendant bracket	7-10
PC	Pendant coupler	7-10
QC3	Quick ceiling bracket	7-10
SC	Suspension clamp	7-11
SH	Suspension hook	7-11
TA3	T-piece	7-9
TFRW	Protective tube for TRM6	7-11
TRM6	Threaded rod M6	7-11
WB	Wall bracket	7-11
WS	Wire suspension set	7-11
XA3	X-piece	7-9

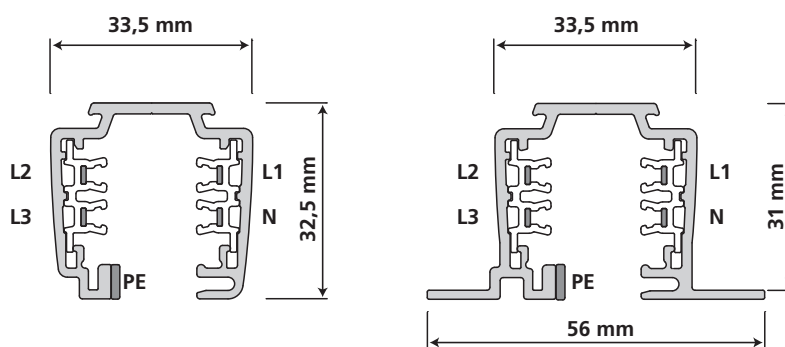




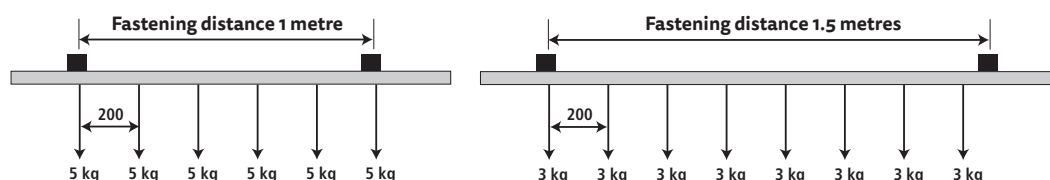
Characteristics

Material	<p>The track's frame material is extruded aluminium. The insulation profiles inside the frame are plastic. The phase and neutral conductors are 2.5 mm² rectangular copper, the earth contact is cut on the aluminium frame. The material of the plastic accessories is self-extinguishing polycarbonate, class V0.</p> <p>The surface treatment alternatives are powder-coated white (RAL 9010), grey (RAL 7040), black (RAL 9005), and anodised natural white.</p> <p>Other RAL colours and treatments available by special order.</p>
Conductors	Three phase conductors (L1, L2, and L3), neutral (N) and ground (PE).
Protection class	Protection class 1 IP20.
Other	Can be cut on site to suitable dimensions. No need to bend or tool the power conductors after cutting.
Quality and safety	<p>Tested in accordance with the standards EN 60570 and EN 60598.</p> <p>     </p>

Profile measurements

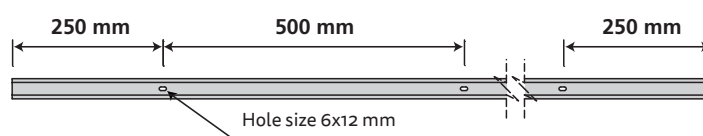


Load-bearing capacity



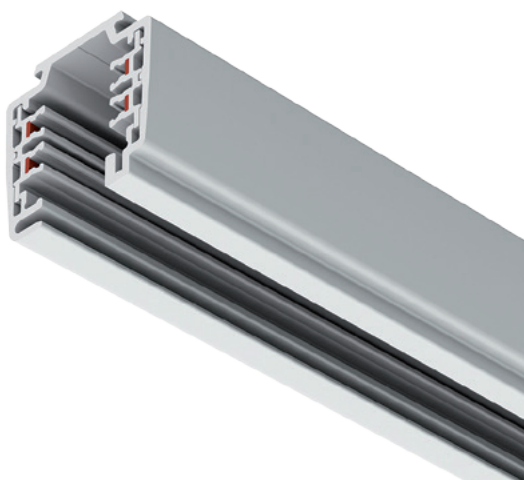
Mounting holes

Pre-cut holes on the bottom of the track



Surface track

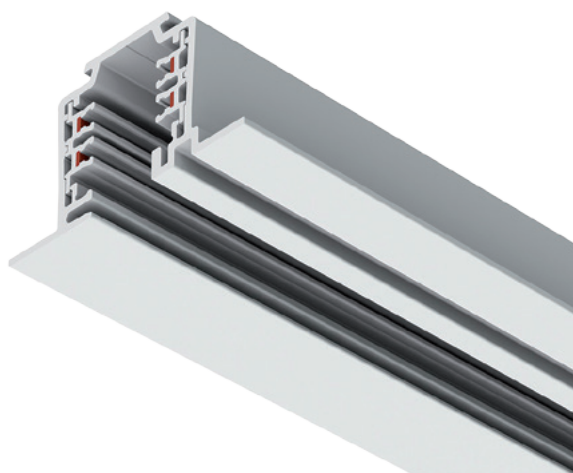
16 A 250/400 VAC 50 Hz CLASS I IP20



Code	Type	Product name
1459102	T32W	3-circuit track, white, 2 metres (surface)
1459103	T33W	3-circuit track, white, 3 metres (surface)
1459104	T34W	3-circuit track, white, 4 metres (surface)
1459232	T32G	3-circuit track, grey, 2 metres (surface)
1459233	T33G	3-circuit track, grey, 3 metres (surface)
1459234	T34G	3-circuit track, grey, 4 metres (surface)
1459302	T32B	3-circuit track, black, 2 metres (surface)
1459303	T33B	3-circuit track, black, 3 metres (surface)
1459304	T34B	3-circuit track, black, 4 metres (surface)
1459202	T32AD	3-circuit track, anodised, 2 metres (surface)
1459203	T33AD	3-circuit track, anodised, 3 metres (surface)
1459304	T34AD	3-circuit track, anodised, 4 metres (surface)

Recessed track

16 A 250/400 VAC 50 Hz CLASS I IP20



Code	Type	Product name
1459112	T32FW	3-circuit track, white, 2 metres (recessed)
1459113	T33FW	3-circuit track, white, 3 metres (recessed)
1459114	T34FW	3-circuit track, white, 4 metres (recessed)
1459182	T32FG	3-circuit track, grey, 2 metres (recessed)
1459183	T33FG	3-circuit track, grey, 3 metres (recessed)
1459184	T34FG	3-circuit track, grey, 4 metres (recessed)
1459312	T32FB	3-circuit track, black, 2 metres (recessed)
1459313	T33FB	3-circuit track, black, 3 metres (recessed)
1459314	T34FB	3-circuit track, black, 4 metres (recessed)
1459212	T32FAD	3-circuit track, anodised, 2 metres (recessed)
1459213	T33FAD	3-circuit track, anodised, 3 metres (recessed)
1459314	T34FAD	3-circuit track, anodised, 4 metres (recessed)

Coloured lighting tracks

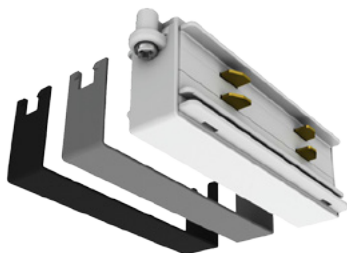
Painted (RAL colours) and decorated (Decoral)



Code	Type	Product name
1459142	T32S	3-circuit track, colour RAL, 2 metres (surface)
1459143	T33S	3-circuit track, colour RAL, 3 metres (surface)
1459144	T34S	3-circuit track, colour RAL, 4 metres (surface)
1459132	T32D	3-circuit track, decoral, 2 metres (surface)
1459133	T33D	3-circuit track, decoral, 3 metres (surface)
1459134	T34D	3-circuit track, decoral, 4 metres (surface)
1459172	T32FS	3-circuit track, colour RAL, 2 metres (recessed)
1459173	T33FS	3-circuit track, colour RAL, 3 metres (recessed)
1459174	T34FS	3-circuit track, colour RAL, 4 metres (recessed)

Joining unit

Joining unit for all unipro® lighting tracks.



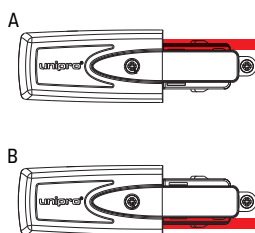
Code	Type	Product name
1459199	JU3	Joining unit
<i>Includes covers in black and grey</i>		

When required, the alternative coloured cover on top of the white one

Power supply

Connection unit. Screw terminals for stranded or solid (3x1.5 mm² – 5x2.5 mm²) wires.

Select the correct earthing option.



Code	Type	Product name
1459121	CU3AW	Connection unit, white (earthing A)
1459122	CU3BW	Connection unit, white (earthing B)
1459221	CU3AG	Connection unit, grey (earthing A)
1459222	CU3BG	Connection unit, grey (earthing B)
1459321	CU3AB	Connection unit, black (earthing A)
1459322	CU3BB	Connection unit, black (earthing B)

Middle connection

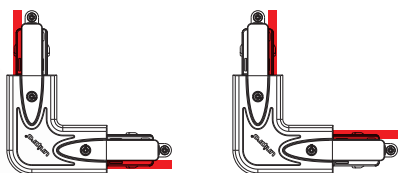
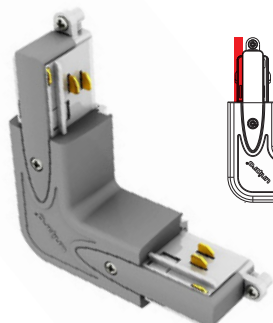
Power supply option. Terminals for stranded or solid (3x1.5 mm² – 5x2.5 mm²) wires.



Code	Type	Product name
1459131	MCU3W	Middle connection unit, white
1459231	MCU3G	Middle connection unit, grey
1459331	MCU3B	Middle connection unit, black

L-corner

Power supply option. Terminals for stranded or solid (3x1.5 mm² – 5x2.5 mm²) wires. The earthing line position can be changed on site, by screwing the lid open, turning the frame by 180°, and by screwing the lid back on.



Code	Type	Product name
1459141	LC3W	L-corner, white
1459241	LC3G	L-corner, grey
1459341	LC3B	L-corner, black

Adjustable corner piece

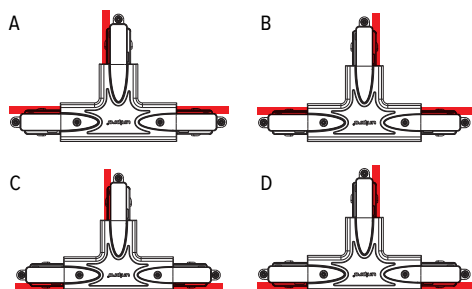
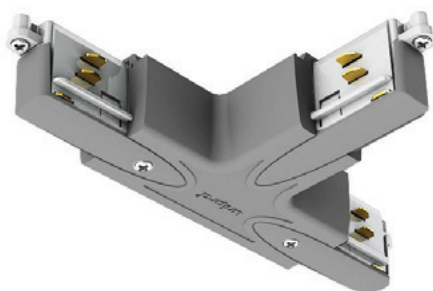
Horizontal adjustment range 0 ± 120°.



Code	Type	Product name
1459151	ALC3W	Adjustable corner piece, white
1459251	ALC3G	Adjustable corner piece, grey
1459351	ALC3B	Adjustable corner piece, black

T-piece

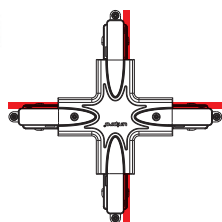
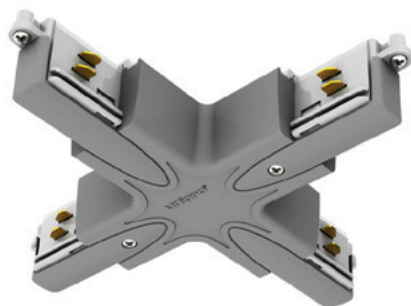
Power supply option. Terminals for stranded or solid ($3 \times 1.5 \text{ mm}^2 - 5 \times 2.5 \text{ mm}^2$) wires.



Code	Type	Product name
1459161	TA3AW	T-piece, white (earthing A)
1459162	TA3BW	T-piece, white (earthing B)
1459163	TA3CW	T-piece, white (earthing C)
1459164	TA3DW	T-piece, white (earthing D)
1459261	TA3AG	T-piece, grey (earthing A)
1459262	TA3BG	T-piece, grey (earthing B)
1459263	TA3CG	T-piece, grey (earthing C)
1459264	TA3DG	T-piece, grey (earthing D)
1459361	TA3AB	T-piece, black (earthing A)
1459362	TA3BB	T-piece, black (earthing B)
1459363	TA3CB	T-piece, black (earthing C)
1459364	TA3DB	T-piece, black (earthing D)

X-piece

Power supply option. Terminals for stranded or solid ($3 \times 1.5 \text{ mm}^2 - 5 \times 2.5 \text{ mm}^2$) wires.



Code	Type	Product name
1459171	XA3W	X-piece, white
1459271	XA3G	X-piece, grey
1459371	XA3B	X-piece, black

Adapter

The unipro® A100 adapter is used when connecting 1- or 3-circuit devices or lamps to the unipro® lighting track.



Code	Type	Product name
1459011	A100W	Adapter, white
1459012	A100G	Adapter, grey
1459013	A100B	Adapter, black

Features	
Nominal values	16A, 250/400 VAC, 50Hz
Protection class	I IP20
Connecting wire	$3 \times 1.5 \text{ mm}^2 - 5 \times 2.5 \text{ mm}^2$
Pull strength	100N
Casing material	Self-extinguishing polycarbonate, class V0
Quality and safety	Tested in accordance with the standards EN 60570 and EN 60598.

End cap

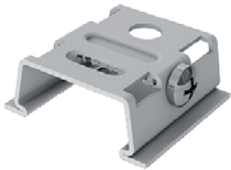
Plastic



Code	Type	Product name
1459181	EC3W	End cap, white
1459281	EC3G	End cap, grey
1459381	EC3B	End cap, black

Ceiling bracket

Steel, can be used with the products WS15, WS40, WS60, and TRM6.



Code	Type	Product name
1459401	CB3W	Ceiling bracket, white
1459402	CB3G	Ceiling bracket, grey
1459403	CB3B	Ceiling bracket, black

Pendant bracket

Steel. Can be used with the hooked wire suspension set WS40H, or just with cables.



Code	Type	Product name
1459407	PB W	Pendant bracket, white
1459408	PB G	Pendant bracket, grey
1459409	PB B	Pendant bracket, black

Adjustable pendant bracket

Adjustment range 0 – 30 mm. Can be used with the threaded rod TRM6.



Code	Type	Product name
1459404	PBA W	Adjustable pendant bracket, white
1459405	PBA G	Adjustable pendant bracket, grey
1459406	PBA B	Adjustable pendant bracket, black

Pendant coupler

Steel. Recommended to be used where two tracks have been joined with the joining unit JU3.



Code	Type	Product name
1459431	PC W	Pendant coupler, white
1459432	PC G	Pendant coupler, grey
1459433	PC B	Pendant coupler, black

Ceiling bracket with cup

Can be used with the threaded rod TRM6.



Code	Type	Product name
1459434	CBC W	Ceiling bracket with cup, white
1459435	CBC B	Ceiling bracket with cup, black

Quick connector

Can be used with the wire suspension sets WS15, WS40 and WS60, as well as with the threaded rod TRM6.



Code	Type	Product name
1459100	QC3G	Quick connector

Wire suspension set

WS sets intended for the CB3 and QC3 connectors and brackets, the WS40H set is intended for the PB and PC connectors and bracket.

WS15...WS60



WS40H



Code	Type	Product name
1459410	WS15	Adjustable wire suspension set, length 1.5 m
1459411	WS40	Adjustable wire suspension set, length 4.0 m
1459412	WS60	Adjustable wire suspension set, length 6.0 m
1459414	WS40H	Adjustable wire suspension set with hook, length 4.0 m

Wall bracket

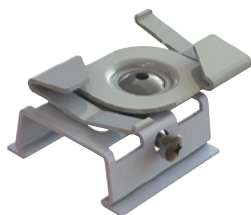
Steel, recommended to be used with the ceiling bracket CB3.



Code	Type	Product name
1459436	WB W	Wall bracket, white
1459437	WB B	Wall bracket, black

Ceiling bracket

Steel, can be attached directly to the 24 mm T-bar.



Code	Type	Product name
1459451	CB3W T-BAR	Ceiling bracket T-bar, white
1459452	CB3G T-BAR	Ceiling bracket T-bar, grey
1459453	CB3B T-BAR	Ceiling bracket T-bar, black

Suspension clamp and suspension hook

SH



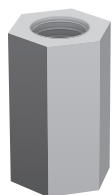
SC3



Code	Type	Product name
1459440	SC3 W	Suspension clamp, white
1459441	SC3 G	Suspension clamp, grey
1459442	SC3 B	Suspension clamp, black
1459443	SH	Suspension hook

Other mounting equipment

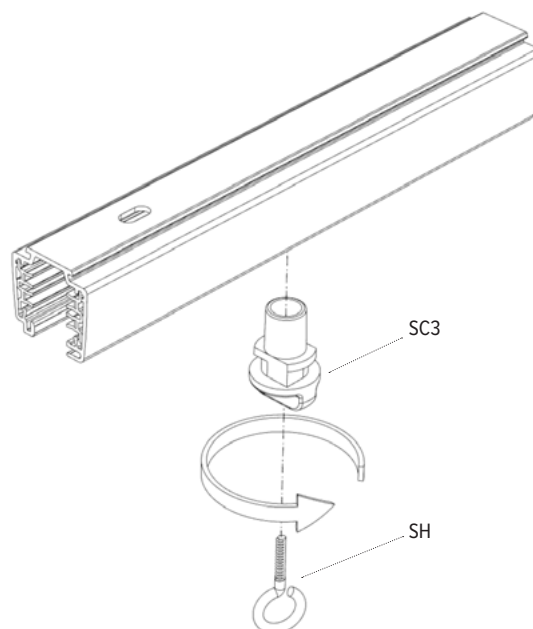
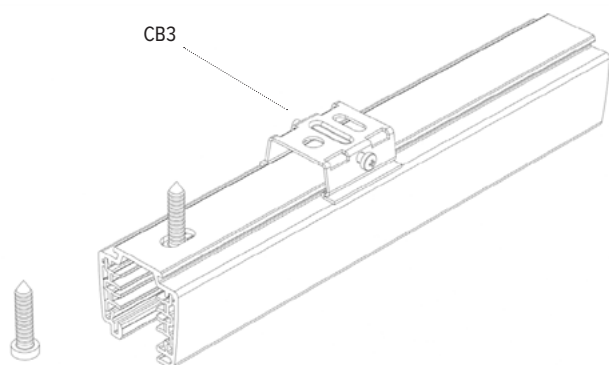
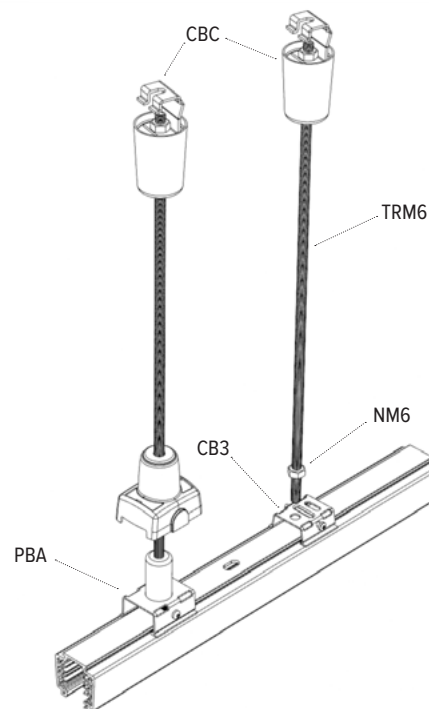
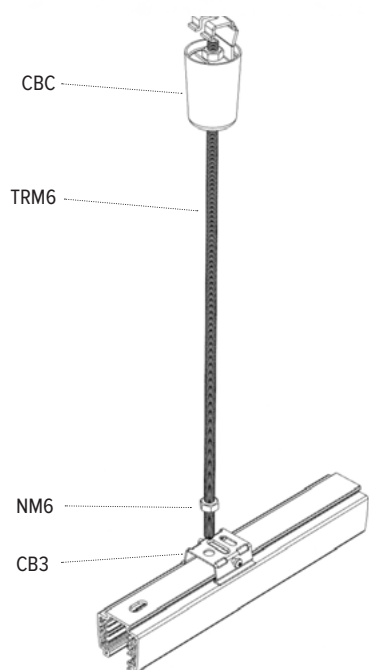
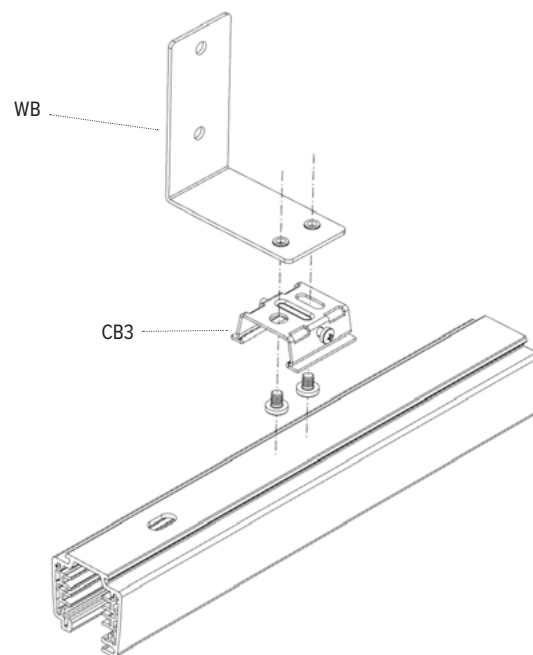
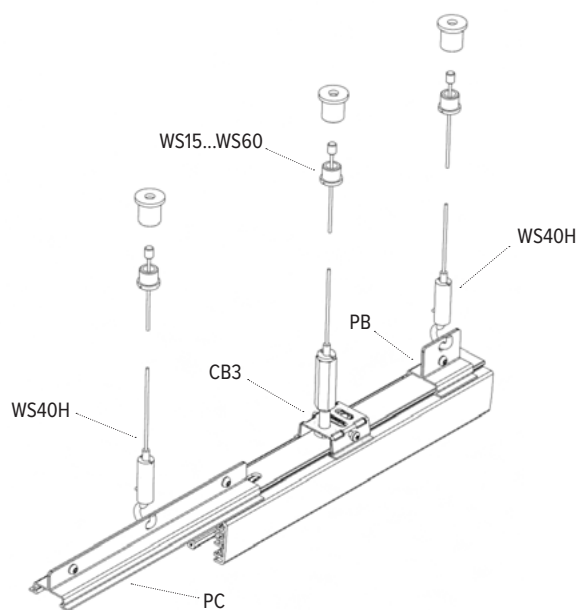
ENM6



TFRW



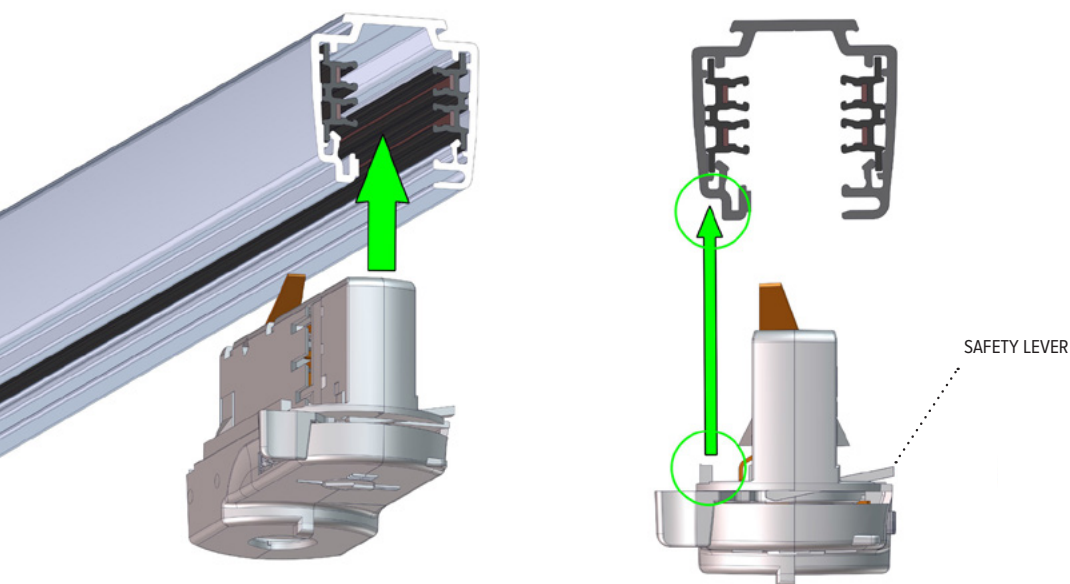
Code	Type	Product name
1459420	TRM6	Threaded rod M6, length 1.0 m
1459425	ENM6	Extension nut for the threaded rod M6
1459426	TFRW	Plastic tube for the threaded rod M6, white
1459427	NM6	Galvanized nut M6



Installation of the unipro® A75 adapter to a 3-circuit lighting track

1. Make sure that the adapter is the right way up

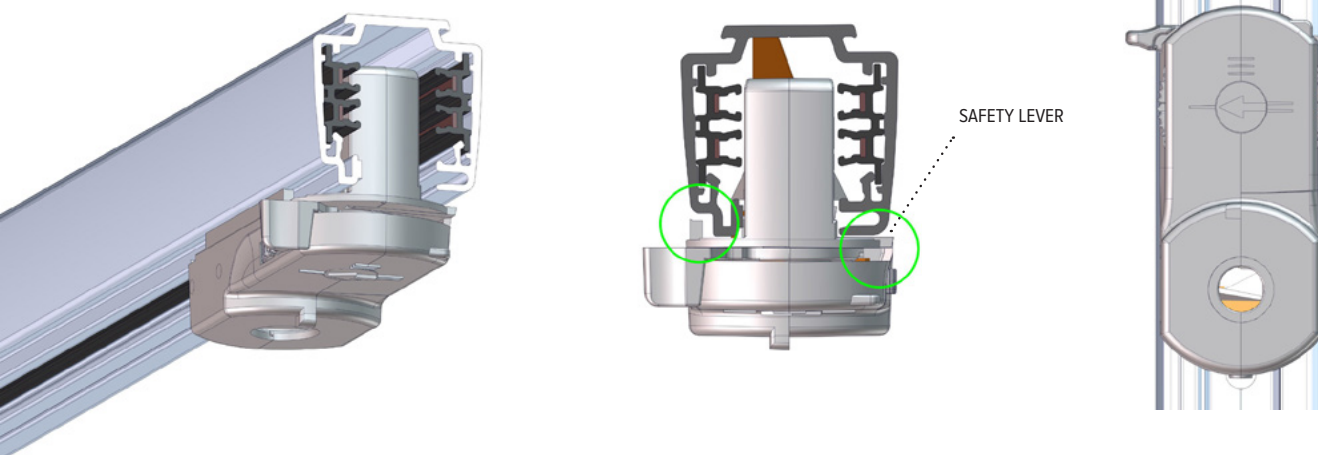
The rib of the adapter is on the same side as the groove in the lighting track.



2. Press the adapter to the lighting track

Ensure that the safety lever is pressed to the bottom, against the lighting track.

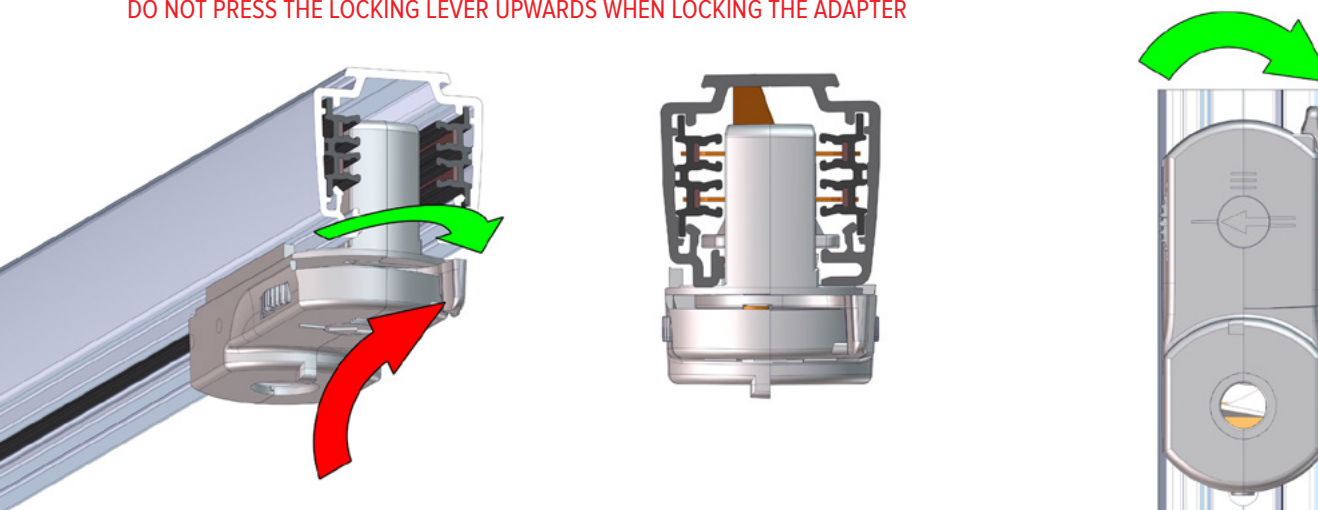
The rib of the adapter is pressed into the groove in the lighting track.



3. Turn the locking lever to lock the adapter in its place.

The locking lever is parallel to the lighting track when the adapter is locked.

DO NOT PRESS THE LOCKING LEVER UPWARDS WHEN LOCKING THE ADAPTER



INSTALLATION D'UNE PLAQUE DE COUVERTURE CP3 UNIPRO

Rail UNIPRO

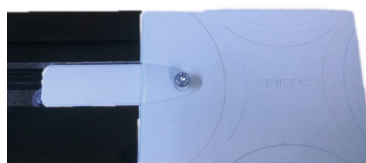
La plaque de couverture CP3 est rainurée de chaque côté pour faciliter la découpe en fonction de votre configuration



La plaque de couverture CP3 est facile à couper en pliant les côtés inutiles



3 côtés du CP3 sont coupés



230V
50Hz

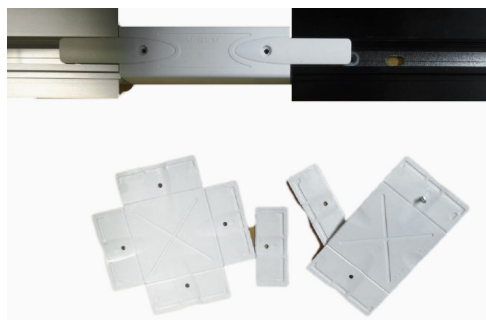
850°

LIGHT IN SHOP
devient

INSTALLATION D'UNE PLAQUE DE COUVERTURE CP3 UNIPRO

Rail UNIPRO

2 côtés du CP3 sont coupés



Le CP3 est assemblé sur le couvercle MCU3 d'origine avec des vis MCU3 (NE PAS RETIRER LE COUVERCLE D'ORIGINE)



230V
50Hz

850°

LIGHT IN SHOP
devient