

LIGHT IN SHOP
devient



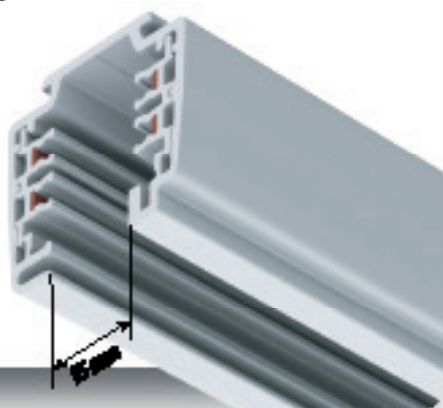
Document technique

RAIL

UNIPRO

Universal lighting track

The unipro® lighting track has been designed to be compatible with the most common spot light systems.



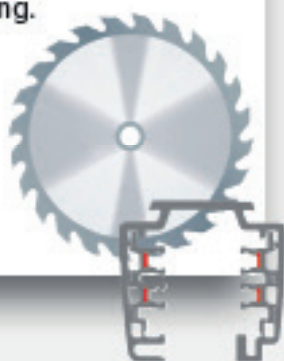
Universal adapter

The unipro® A75 adapter is universal, and designed to be compatible with unipro® lighting tracks as well as with most other common 3-circuit lighting tracks.



Easy to cut

The standard lengths for unipro® lighting tracks are 2, 3, and 4 metres. If necessary, they can be cut to the correct length on the installation site. Otherwise, there is no need to bend or tool the power conductions of the lighting track after the cutting.



Easy to install

The unipro® lighting track has pre-cut holes on the top of the track, at 50 cm intervals.



Easy to connect

The unipro® lighting track system's power supply units have reliable and easy to use screw terminals, which are suitable for stranded or solid wires with a maximum cross section of 2.5 mm².



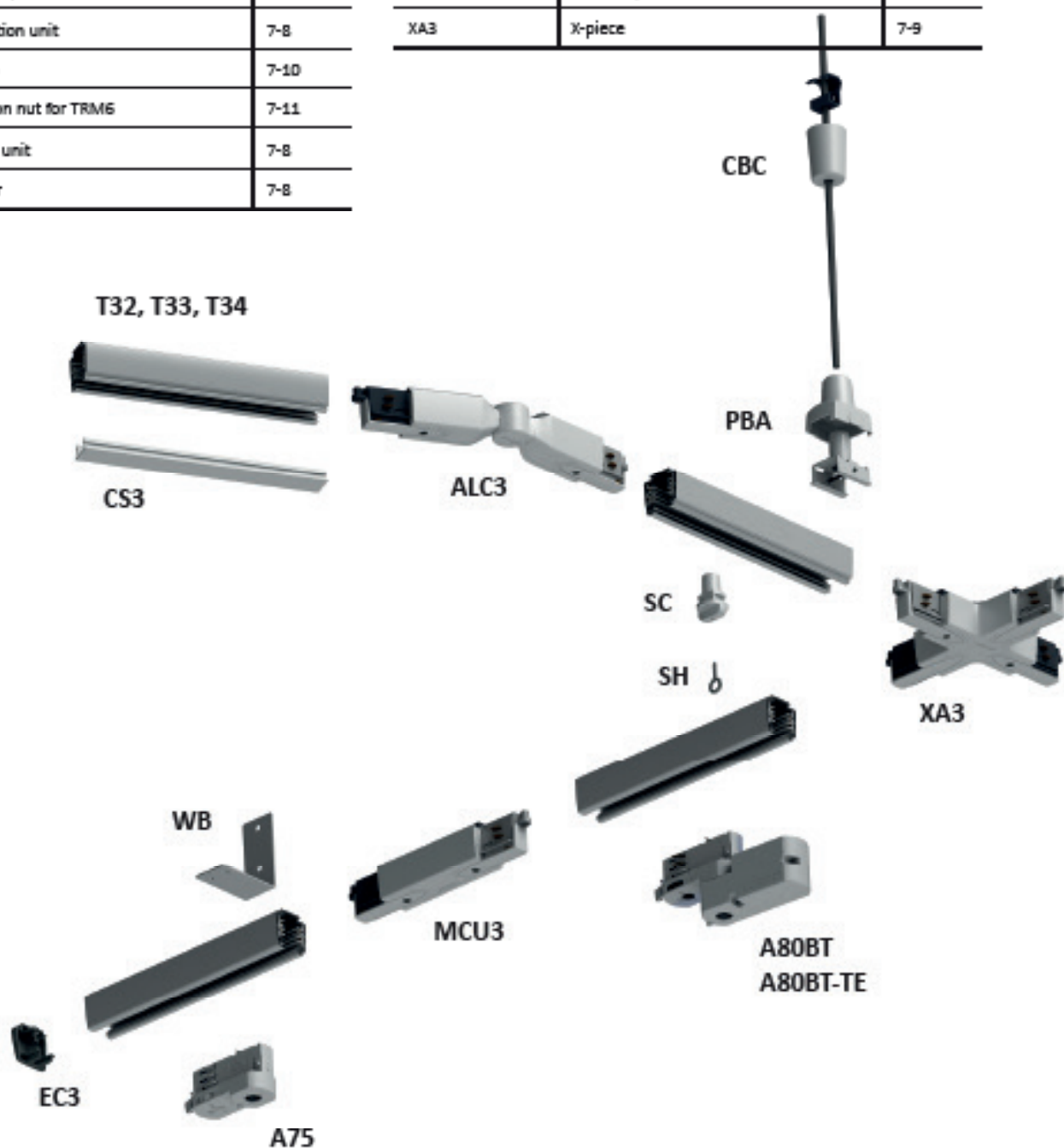
Fewer parts

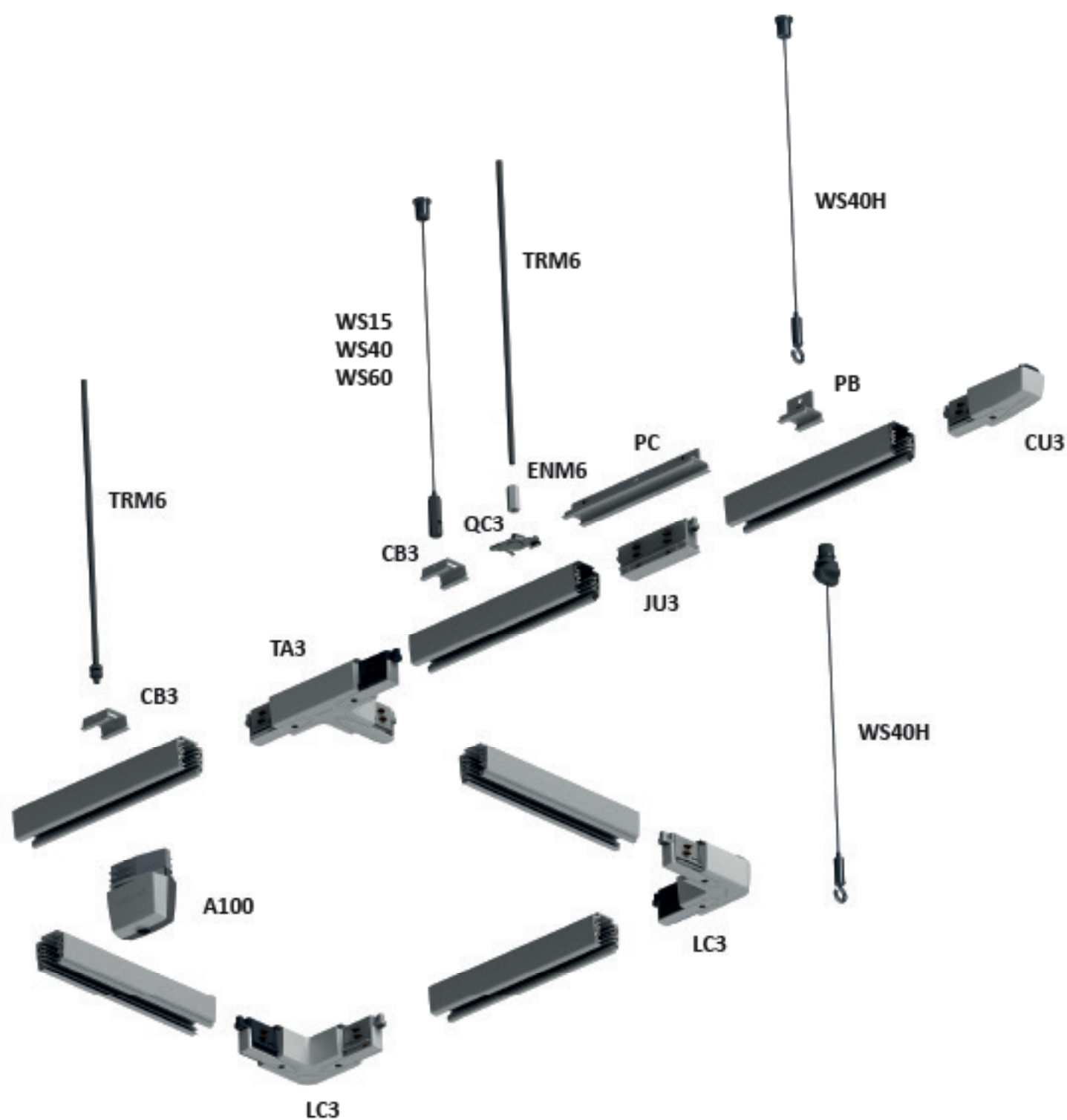
The unipro® lighting track system's L-corner and jointing unit are multi-functional. The polarity of the L-corner, and the colour of the jointing unit can be changed on site as necessary.







Product	Name	Page
T32, T33, T34	Surface lighting track	7-7
T32F, T33F, T34F	Recessed lighting track	7-7
A1D0	Power take-off adapter	7-9
A75	Adapters for lighting fixtures	7-14
A80BT	Bluetooth control unit	7-15
A80BT-TE	Bluetooth control unit	7-15
ALC3	Adjustable corner	7-9
CBB	Ceiling bracket	7-10
CBC	Ceiling bracket with cup	7-10
CP3	Cover plate	7-12
CS3	Cover stripe	7-12
CU3	Connection unit	7-8
EC3	End cap	7-10
ENM6	Extension nut for TRM6	7-11
JU3	Joining unit	7-8
LC3	L-corner	7-8

Product	Name	Page
MCU3	Middle connection unit	7-8
PB	Pendant bracket	7-10
PBA	Adjustable pendant bracket	7-10
PC	Pendant coupler	7-10
QC3	Quick ceiling bracket	7-10
SC	Suspension clamp	7-11
SH	Suspension hook	7-11
TA3	T-piece	7-9
TFRW	Protective tube for TRM6	7-11
TRM6	Threaded rod M6	7-11
WB	Wall bracket	7-11
WS	Wire suspension set	7-11
XA3	X-piece	7-9

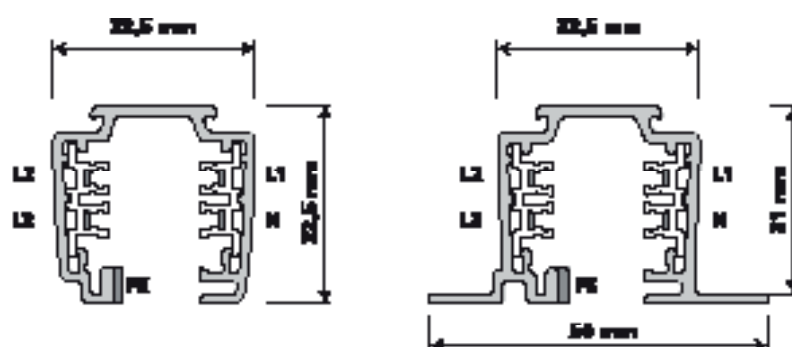




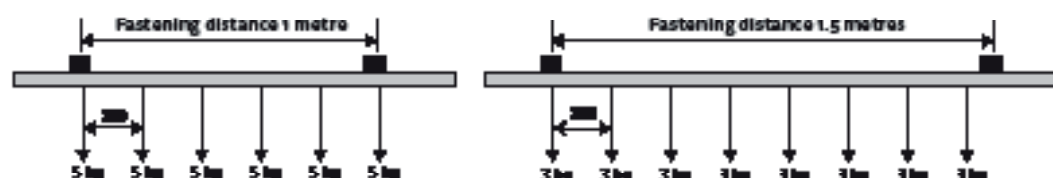
Characteristics

Material	<p>The track's frame material is extruded aluminium. The insulation profiles inside the frame are plastic. The phase and neutral conductors are 2.5 mm² rectangular copper, the earth contact is cut on the aluminium frame. The material of the plastic accessories is self-extinguishing polycarbonate, class V0.</p> <p>The surface treatment alternatives are powder-coated white (RAL 9010), grey (RAL 7040), black (RAL 9005), and anodised natural white.</p> <p>Other RAL colours and treatments available by special order.</p>
Conductors	Three phase conductors (L1, L2, and L3), neutral (N) and ground (PE).
Protection class	Protection class 1 IP20.
Other	Can be cut on site to suitable dimensions. No need to bend or tool the power conductors after cutting.
Quality and safety	<p>Tested in accordance with the standards EN 60570 and EN 60598.</p> <p>     </p>

Profile measurements

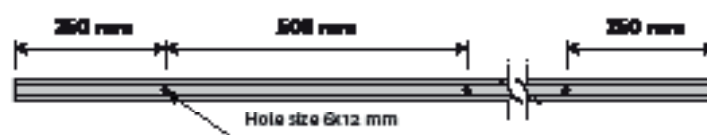


Load-bearing capacity



Mounting holes

Pre-cut holes on the bottom of the track



Surface track

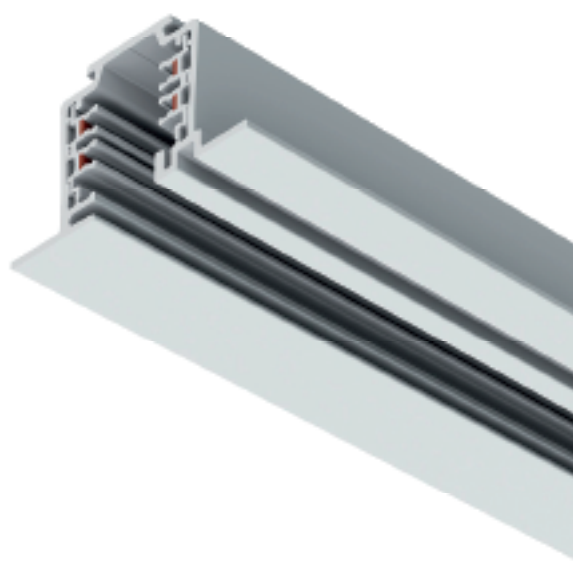
16 A 250/400 VAC 50 Hz CLASS I IP20



Code	Type	Product name
M50M2	T2MF	3-circuit track, white, 2 metres (surface)
M50M3	T2MF	3-circuit track, white, 3 metres (surface)
M50M4	T2MF	3-circuit track, white, 4 metres (surface)
M50Z2	T2SG	3-circuit track, gray, 2 metres (surface)
M50Z3	T2SG	3-circuit track, gray, 3 metres (surface)
M50Z4	T2SG	3-circuit track, gray, 4 metres (surface)
M50B2	T2MB	3-circuit track, black, 2 metres (surface)
M50B3	T2MB	3-circuit track, black, 3 metres (surface)
M50B4	T2MB	3-circuit track, black, 4 metres (surface)
M50D2	T2AD	3-circuit track, anthracite, 2 metres (surface)
M50D3	T2AD	3-circuit track, anthracite, 3 metres (surface)
M50D4	T2AD	3-circuit track, anthracite, 4 metres (surface)

Recessed track

16 A 250/400 VAC 50 Hz CLASS I IP20



Code	Type	Product name
M50R2	T2FR	3-circuit track, white, 2 metres (recessed)
M50R3	T2FR	3-circuit track, white, 3 metres (recessed)
M50R4	T2FR	3-circuit track, white, 4 metres (recessed)
M50Z2	T2FG	3-circuit track, gray, 2 metres (recessed)
M50Z3	T2FG	3-circuit track, gray, 3 metres (recessed)
M50Z4	T2FG	3-circuit track, gray, 4 metres (recessed)
M50B2	T2FB	3-circuit track, black, 2 metres (recessed)
M50B3	T2FB	3-circuit track, black, 3 metres (recessed)
M50B4	T2FB	3-circuit track, black, 4 metres (recessed)
M50D2	T2FD	3-circuit track, anthracite, 2 metres (recessed)
M50D3	T2FD	3-circuit track, anthracite, 3 metres (recessed)
M50D4	T2FD	3-circuit track, anthracite, 4 metres (recessed)

Coloured lighting tracks

Painted (RAL colour) and decorated (Decoral)



Code	Type	Product name
M50M2	T2S	3-circuit track, colour RAL, 2 metres (surface)
M50M3	T2S	3-circuit track, colour RAL, 3 metres (surface)
M50M4	T2S	3-circuit track, colour RAL, 4 metres (surface)
M50D2	T2D	3-circuit track, decorated, 2 metres (surface)
M50D3	T2D	3-circuit track, decorated, 3 metres (surface)
M50D4	T2D	3-circuit track, decorated, 4 metres (surface)
M50R2	T2FS	3-circuit track, colour RAL, 2 metres (recessed)
M50R3	T2FS	3-circuit track, colour RAL, 3 metres (recessed)
M50R4	T2FS	3-circuit track, colour RAL, 4 metres (recessed)

Joining unit

Joining unit for all unipro® lighting tracks.



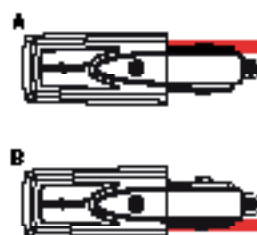
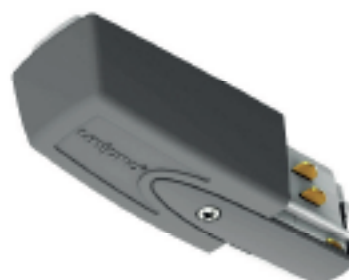
Code	Type	Product name
1450100	JB	Joining unit Includes covers for black and gray

When required, the alternative colored cover on top of the white one

Power supply

Connection unit. Screw terminal for stranded or solid (3x1.5 mm² – 5x2.5 mm²) wires.

Select the correct wiring option.



Code	Type	Product name
1450221	CLEAW	Connection unit, white (wiring A)
1450222	CLEBW	Connection unit, white (wiring B)
1450221	CLEAG	Connection unit, gray (wiring A)
1450222	CLEBG	Connection unit, gray (wiring B)
1450221	CLEAB	Connection unit, black (wiring A)
1450222	CLEBB	Connection unit, black (wiring B)

Middle connection

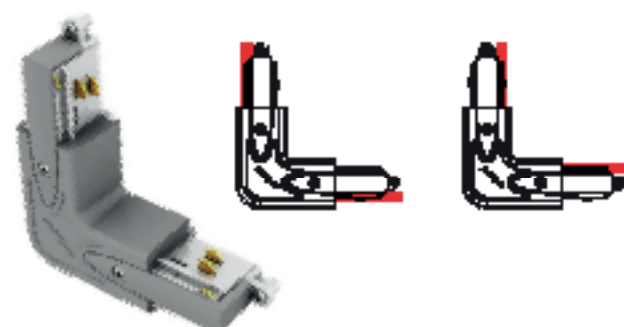
Power supply option. Terminals for stranded or solid (3x1.5 mm² – 5x2.5 mm²) wires.



Code	Type	Product name
1450231	MX12W	Middle connection unit, white
1450231	MX12G	Middle connection unit, gray
1450231	MX12B	Middle connection unit, black

L-corner

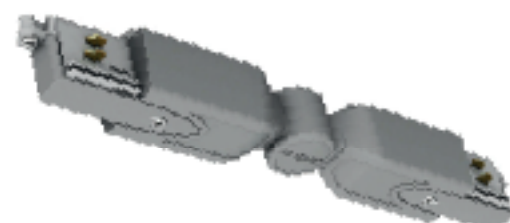
Power supply option. Terminals for stranded or solid (3x1.5 mm² – 5x2.5 mm²) wires. The wiring line position can be changed on site, by screwing the lid open, turning the frame by 180°, and by screwing the lid back on.



Code	Type	Product name
1450401	LC2W	L-corner, white
1450401	LC2G	L-corner, gray
1450401	LC2B	L-corner, black

Adjustable corner piece

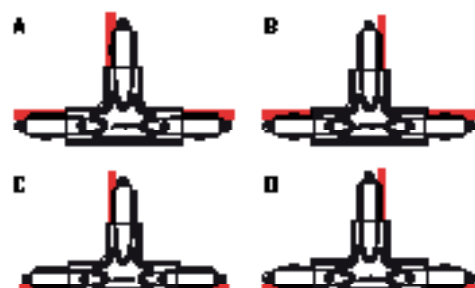
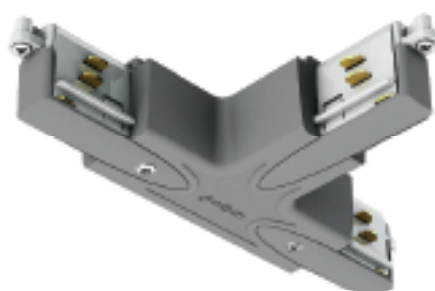
Horizontal adjustment range 0 ± 120°.



Code	Type	Product name
1450501	ALC2W	Adjustable corner piece, white
1450501	ALC2G	Adjustable corner piece, gray
1450501	ALC2B	Adjustable corner piece, black

T-piece

Power supply option. Terminals for stranded or solid (3x1.5 mm² – 5x2.5 mm²) wires.



Code	Type	Product name
1450101	TA24W	T-piece, white (circuiting A)
1450102	TA28W	T-piece, white (circuiting B)
1450103	TA21W	T-piece, white (circuiting C)
1450104	TA27W	T-piece, white (circuiting D)
1450201	TA24G	T-piece, gray (circuiting A)
1450202	TA28G	T-piece, gray (circuiting B)
1450203	TA21G	T-piece, gray (circuiting C)
1450204	TA27G	T-piece, gray (circuiting D)
1450301	TA24B	T-piece, black (circuiting A)
1450302	TA28B	T-piece, black (circuiting B)
1450303	TA21B	T-piece, black (circuiting C)
1450304	TA27B	T-piece, black (circuiting D)

X-piece

Power supply option. Terminals for stranded or solid (3x1.5 mm² – 5x2.5 mm²) wires.



Code	Type	Product name
1450071	XA2W	X-piece, white
1450271	XA2G	X-piece, gray
1450371	XA2B	X-piece, black

Adapter

The unipro® ABB adapter is used when connecting 1- or 3-circuit devices or lamps to the unipro® lighting track.



Code	Type	Product name
1450001	A100W	Adapter, white
1450002	A100G	Adapter, gray
1450003	A100B	Adapter, black

Features	
Rated value	16A, 250/400 VAC, 50Hz
Protection class	IP20
Connecting wire	3x1.5 mm ² – 5x2.5 mm ²
Pull strength	100N
Casing material	Self-extinguishing polycarbonate, class V0
Quality and safety	Tested in accordance with the standards EN 60570 and EN 60598.

End cap

Plastic



Code	Type	Product name
W50401	ECW	End cap, white
W50402	ECG	End cap, gray
W50403	ECB	End cap, black

Ceiling bracket

Steel, can be used with the products W515, W540, W560, and TRMG.



Code	Type	Product name
W50404	CEW	Ceiling bracket, white
W50405	CEG	Ceiling bracket, gray
W50406	CEB	Ceiling bracket, black

Pendant bracket

Steel. Can be used with the hooked wire suspension set W540H, or just with cables.



Code	Type	Product name
W50407	PBW	Pendant bracket, white
W50408	PBG	Pendant bracket, gray
W50409	PBB	Pendant bracket, black

Adjustable pendant bracket

Adjustment range 0 – 30 mm. Can be used with the threaded rod TRMG.



Code	Type	Product name
W50410	PBA W	Adjustable pendant bracket, white
W50411	PBA G	Adjustable pendant bracket, gray
W50412	PBA B	Adjustable pendant bracket, black

Pendant coupler

Steel. Recommended to be used where two tracks have been joined with the joining unit JJJ.



Code	Type	Product name
W50421	PC W	Pendant coupler, white
W50422	PC G	Pendant coupler, gray
W50423	PC B	Pendant coupler, black

Ceiling bracket with cup

Can be used with the threaded rod TRMG.



Code	Type	Product name
W50424	CCE W	Ceiling bracket with cup, white
W50425	CCE B	Ceiling bracket with cup, black

Quick connector

Can be used with the wire suspension sets W515, W540 and W560, as well as with the threaded rod TRMG.



Code	Type	Product name
W50400	QCE	Quick connector

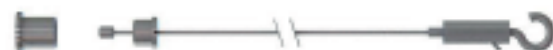
Wire suspension set

WS sets intended for the CB3 and GC3 connectors and brackets, the WS-4BH set is intended for the PB and PC connectors and bracket.

WS3-JWS3D



WS-4BH



Code	Type	Product name
WS34T0	WS3S	Adjustable wire suspension set, length 1.5 m
WS34T1	WS40	Adjustable wire suspension set, length 4.0 m
WS34T2	WS50	Adjustable wire suspension set, length 5.0 m
WS34T4	WS40H	Adjustable wire suspension set with hook, length 4.0 m

Wall bracket

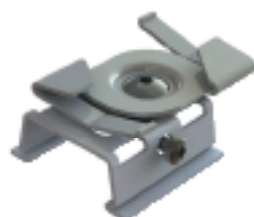
Steel, recommended to be used with the ceiling bracket CB3.



Code	Type	Product name
WS34C6	WB W	Wall bracket, white
WS34C7	WB B	Wall bracket, black

Ceiling bracket

Steel, can be attached directly to the 24 mm T-bar.



Code	Type	Product name
WS34E1	CE3W T-BAR	Ceiling bracket T-Bar, white
WS34E2	CE3G T-BAR	Ceiling bracket T-Bar, grey
WS34E3	CE3B T-BAR	Ceiling bracket T-Bar, black

Suspension clamp and suspension hook

SH



SC3



Code	Type	Product name
WS3440	SC3 W	Suspension clamp, white
WS3441	SC3 G	Suspension clamp, grey
WS3442	SC3 B	Suspension clamp, black
WS3443	SH	Suspension hook

Other mounting equipment

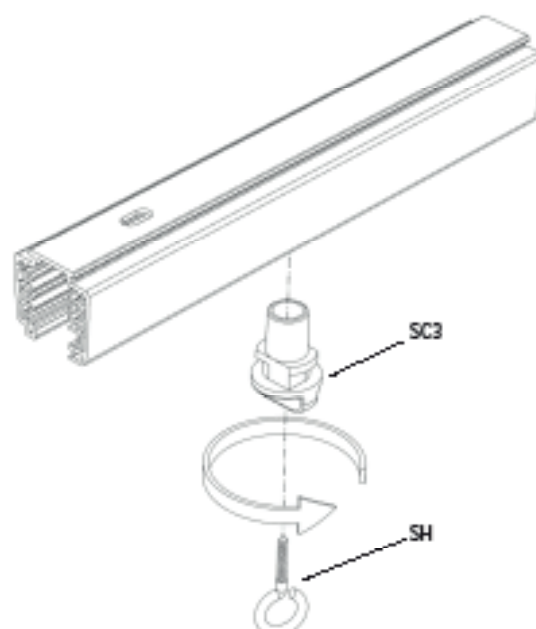
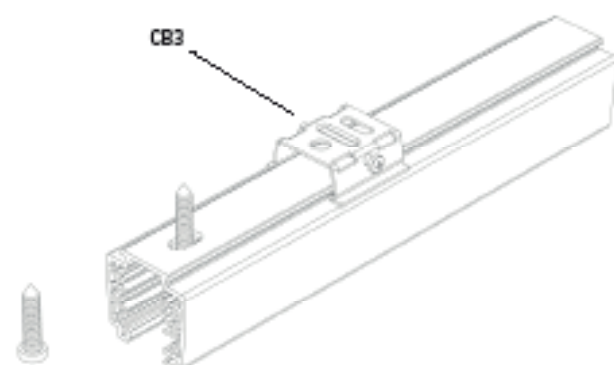
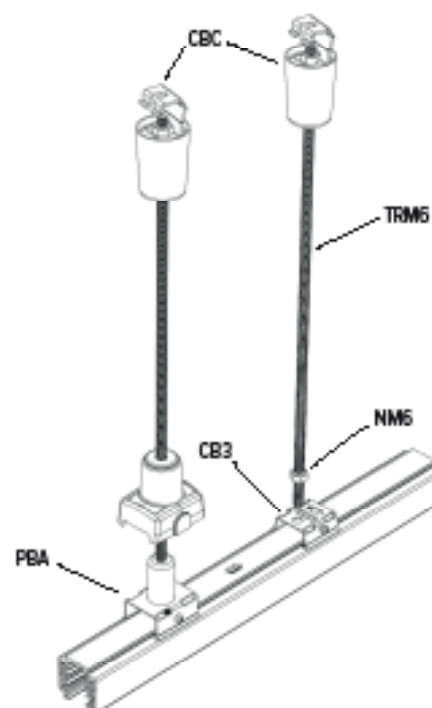
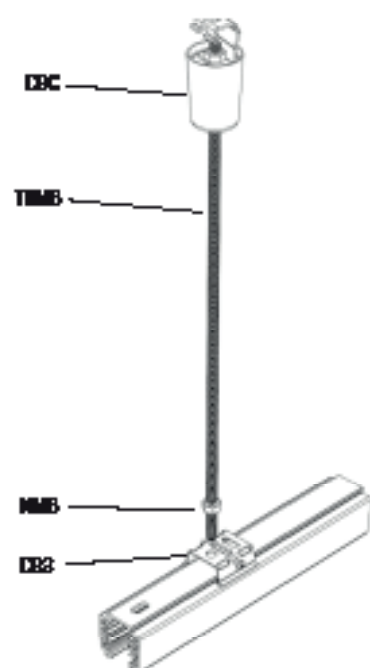
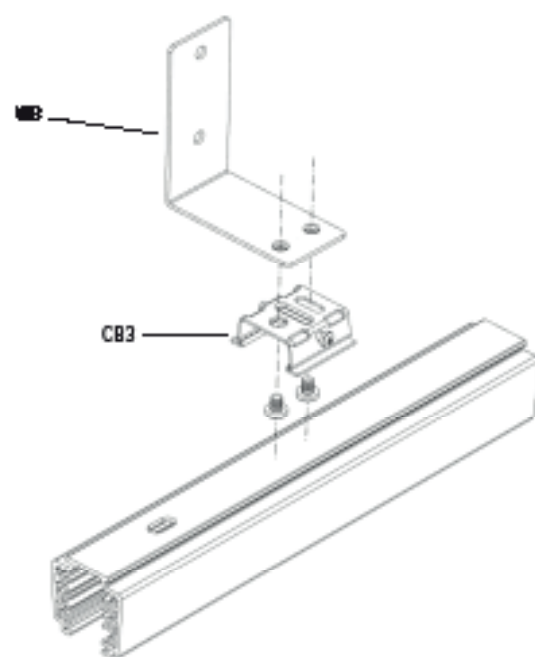
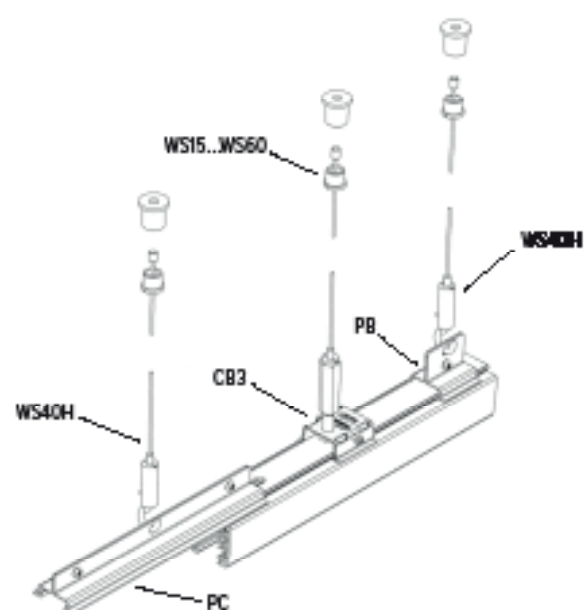
ETMB



TTMB



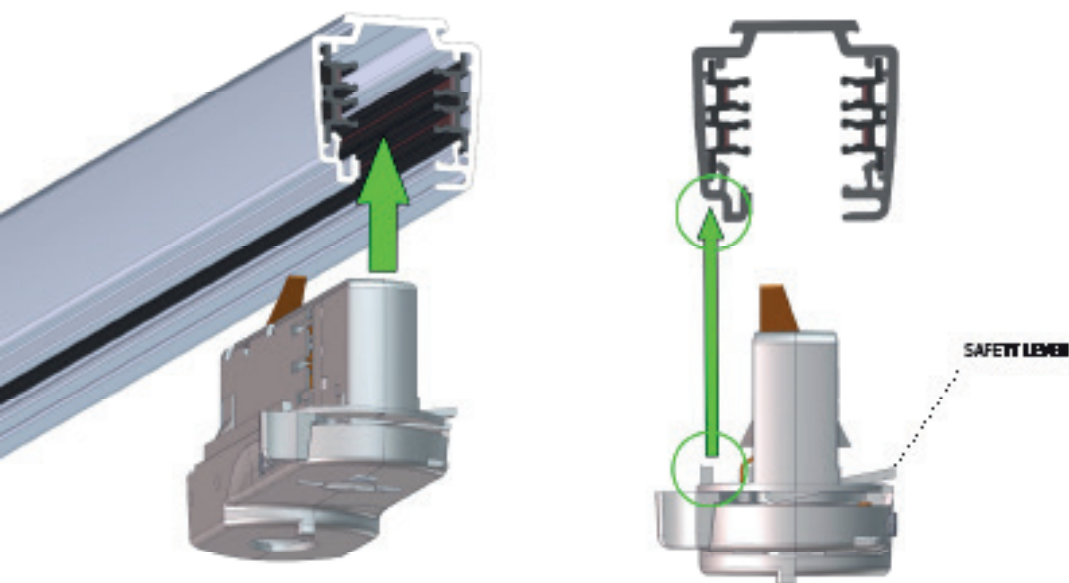
Code	Type	Product name
WS34C3	TMB	Threaded rod MB, length 1.0 m
WS34C5	ETMB	Extension set for the threaded rod MB
WS34C6	TTMB	Plastic tube for the threaded rod MB, white
WS34C7	NMB	Galvanized nut MB



Installation of the unipro® A76 adapter to a 3-circuit lighting track

1. Make sure that the adapter is the right way up

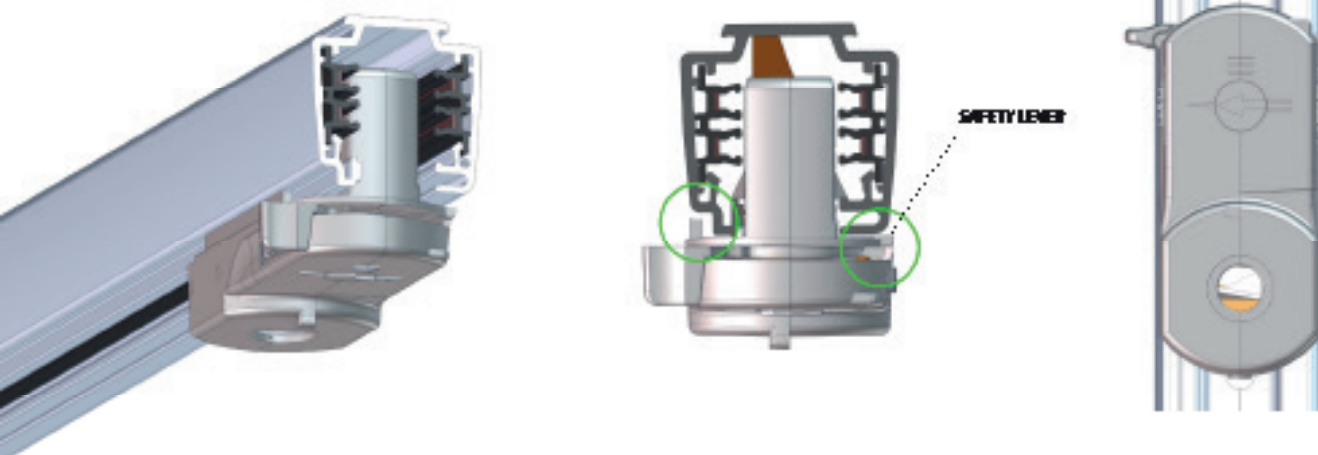
The rib of the adapter is on the same side as the groove in the lighting track.



2. Press the adapter to the lighting track

Ensure that the safety lever is pressed to the bottom, against the lighting track.

The rib of the adapter is pressed into the groove in the lighting track.



3. Turn the locking lever to lock the adapter in its place.

The locking lever is parallel to the lighting track when the adapter is locked.

DO NOT PRESS THE LOCKING LEVER UPWARDS WHEN LOCKING THE ADAPTER

