

Notice de montage

LIN1

CHEMIN LUMINEUX



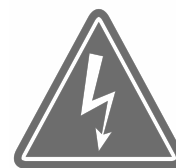
2 Personnes



Niveau



Gants Conseillés pour
la manipulation

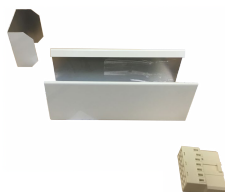


Travailler hors tension

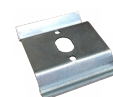
Kit ligne:



gaine de 3.50m ou 1.75m



kit embout-alim



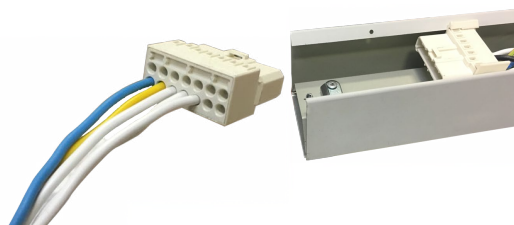
2 éclisses

1. Cablage de l'embout-alim

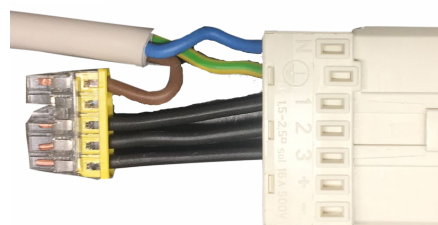
La lin1 comprend l'auto équilibrage des phases



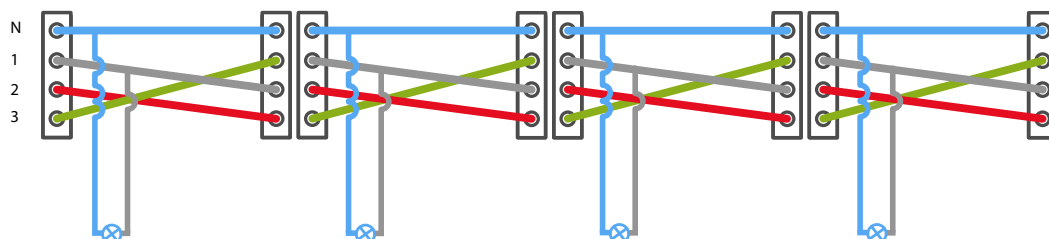
Toujours Alimenter sur les 3 phases (triphase ou monophasé)



Cablage triphasé



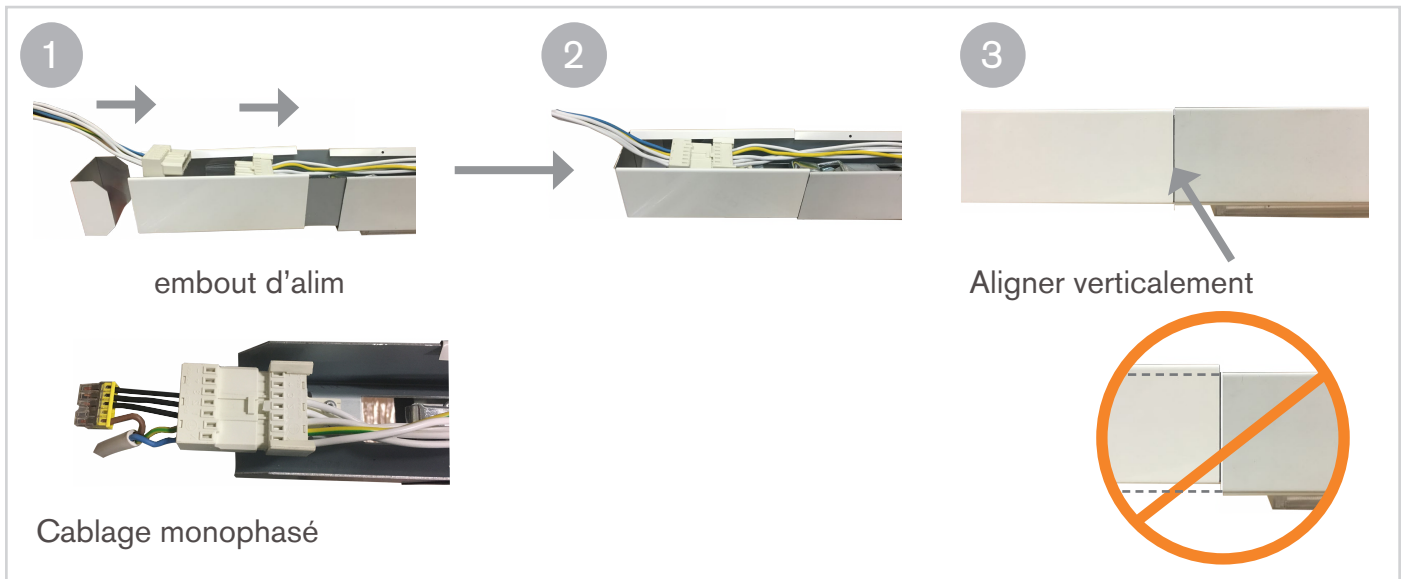
Cablage monophasé



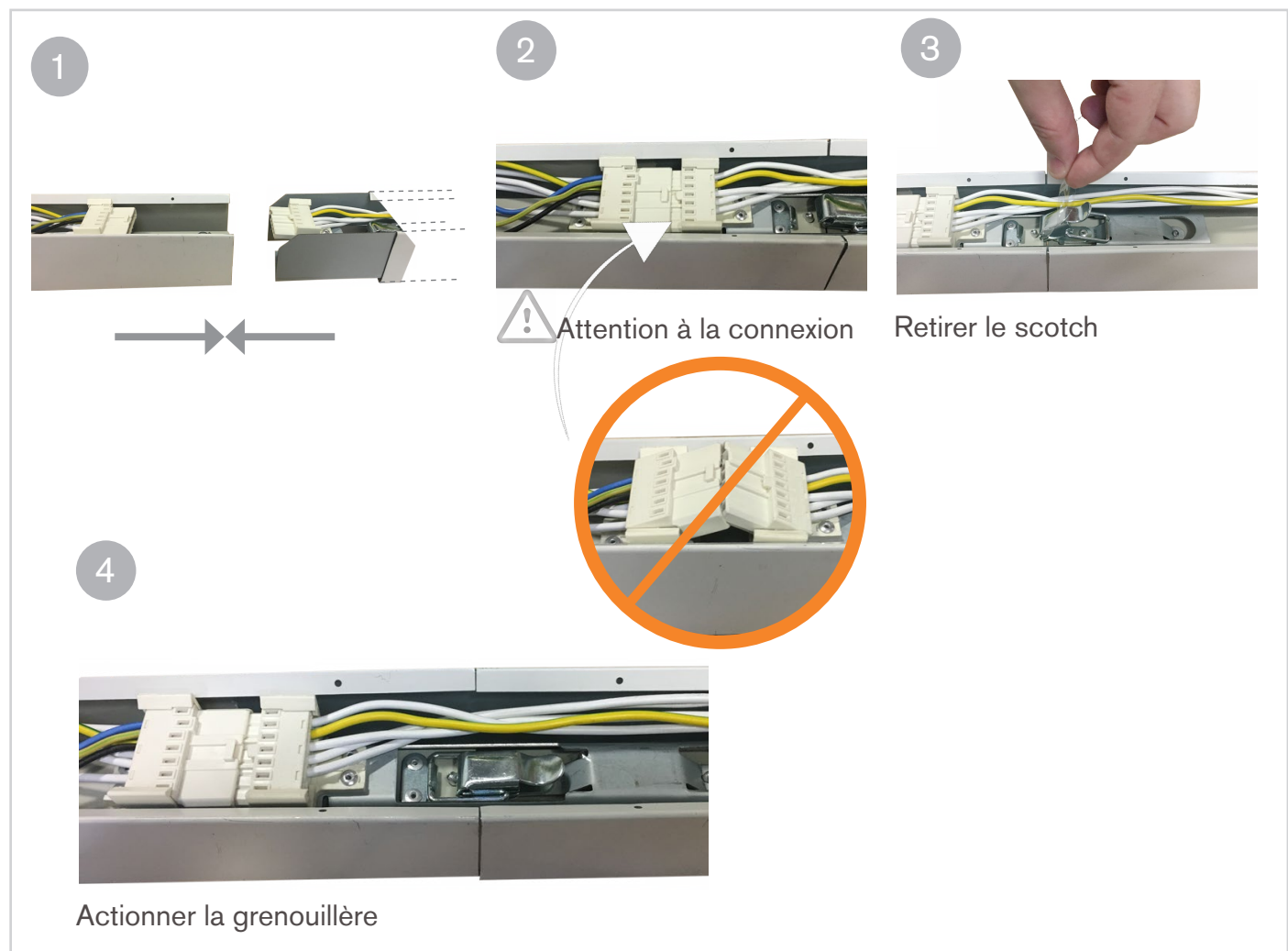
NE PAS RECÂBLER



2 . Assemblage de l'embout

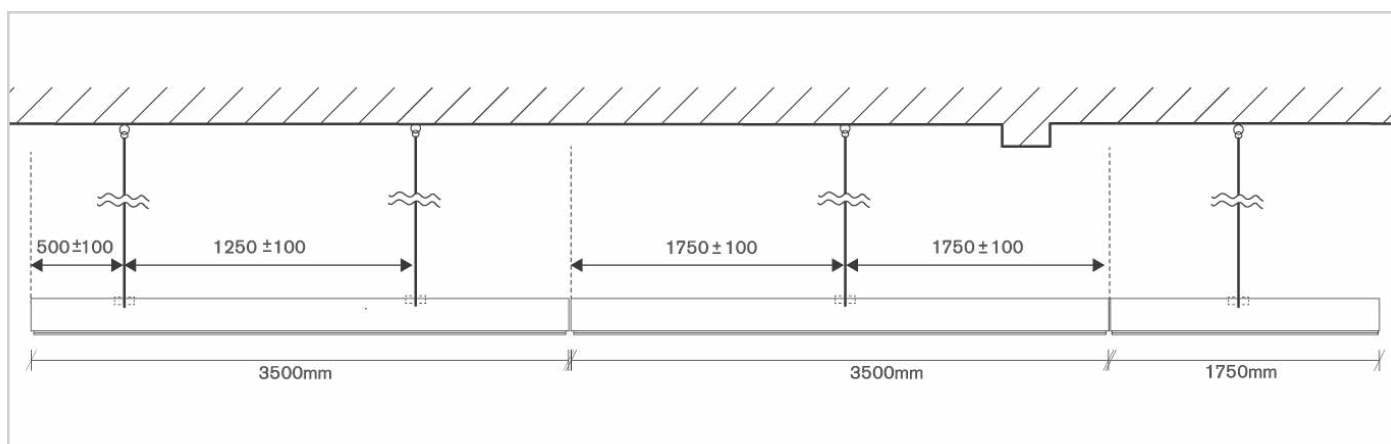


3 .Jonction entre 2 Lin1

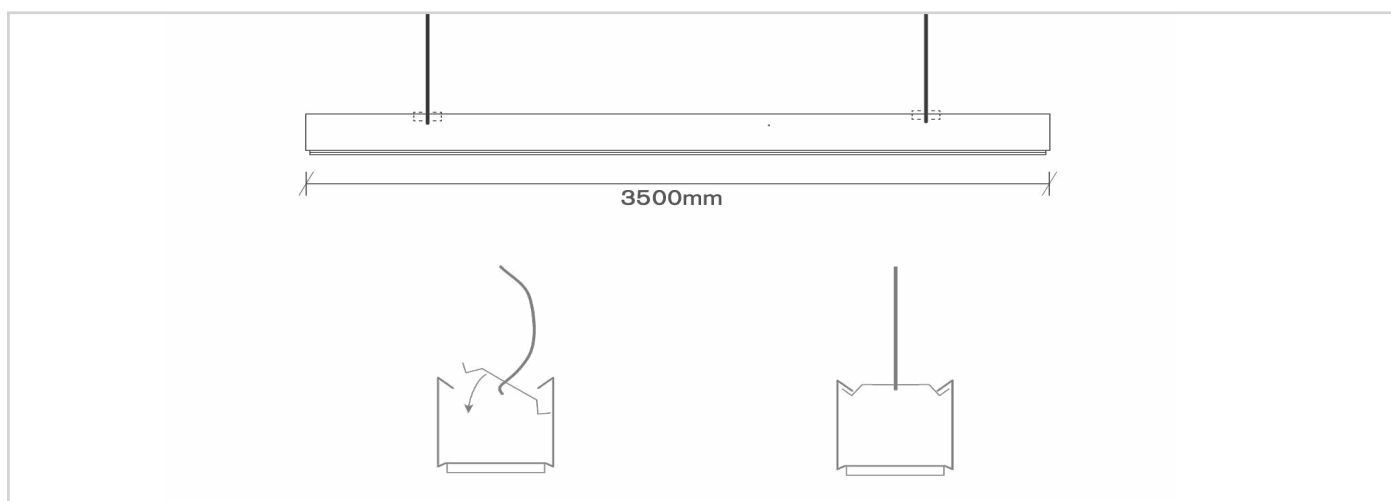


4 . Mise en place des éléments de fixation

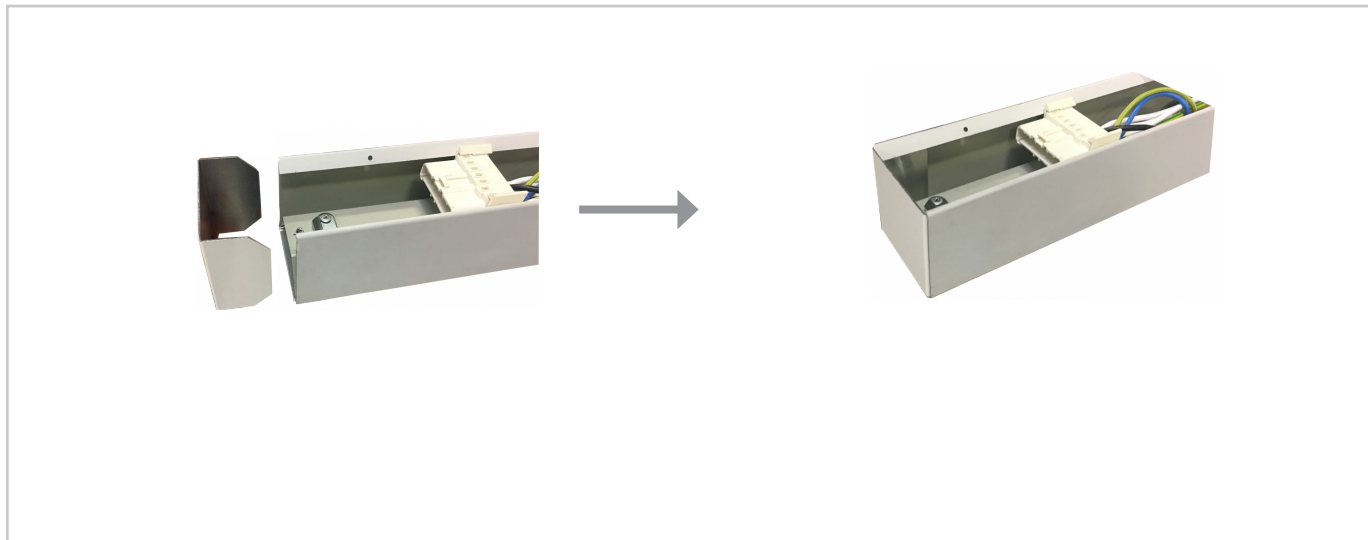
a Entraxe en debut et fin de ligne



b Mise en place des éléments de fixation



5 . Ajout de l'embout de fin



6 . Sens d'un lin1 asymetrique

